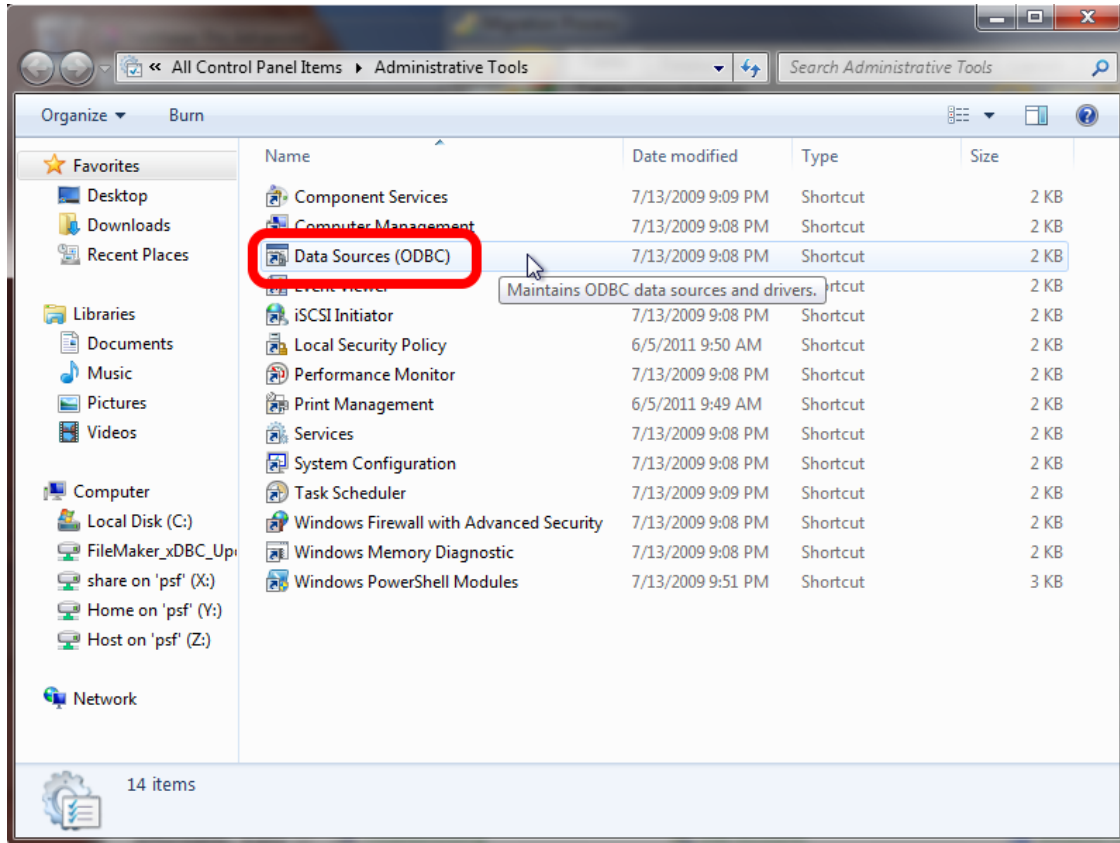


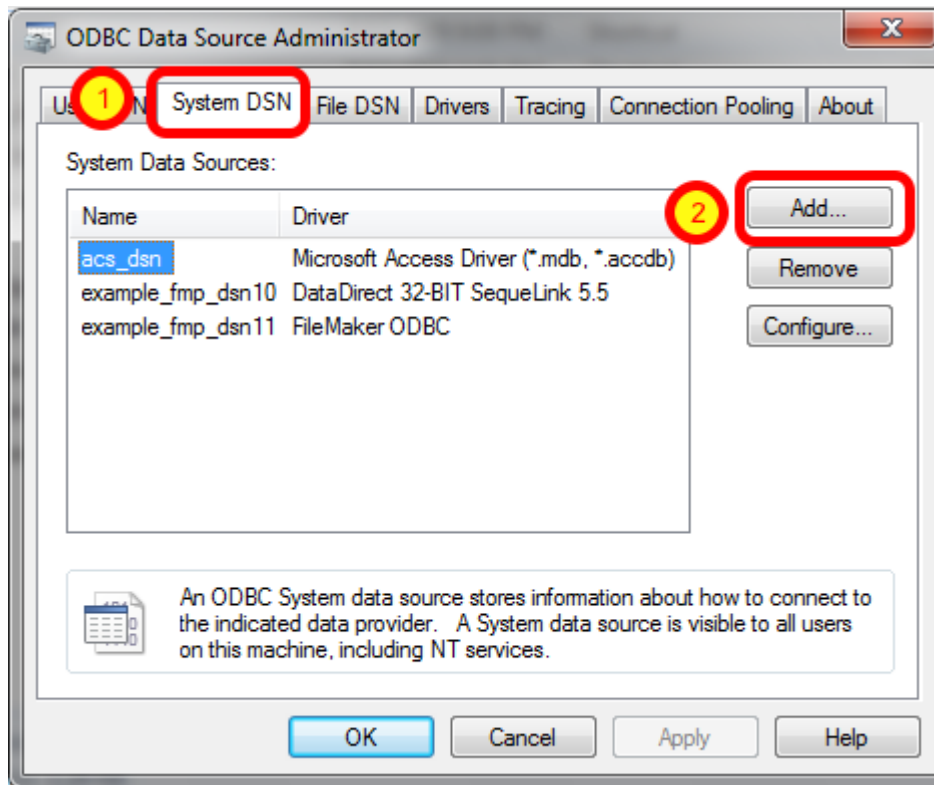
Install FileMaker ODBC Driver - Windows - FileMaker 11

Install the FileMaker ODBC driver from within the xDBC folder on the installation CD or CD image file.

Create ODBC DSN - Windows

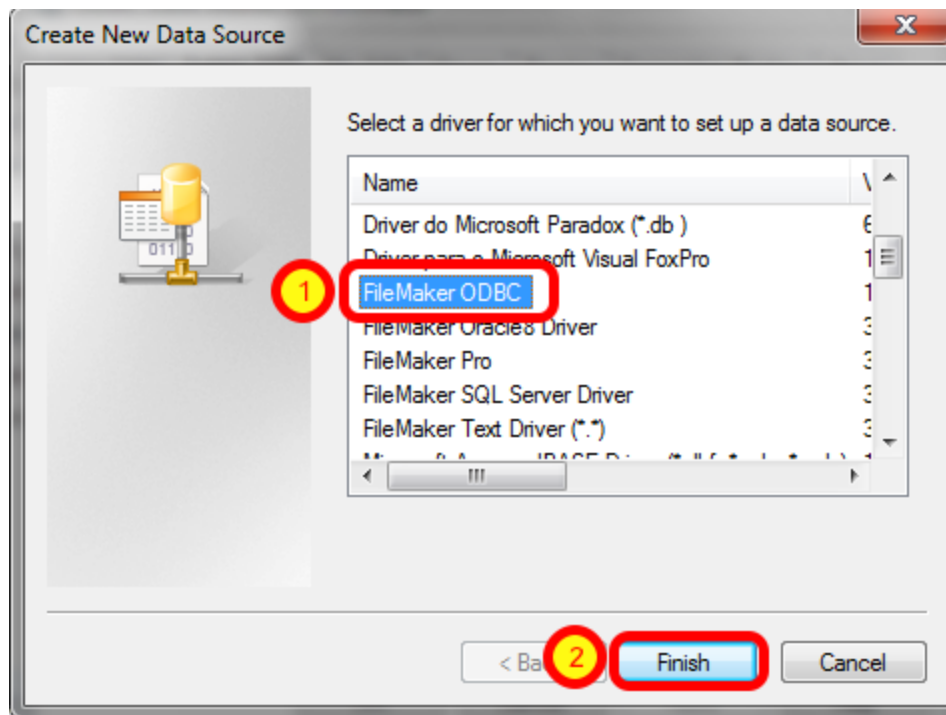


To create a new System ODBC DSN, open the Control Panel > Administrative Tools > Data Sources (ODBC) Control Panel.



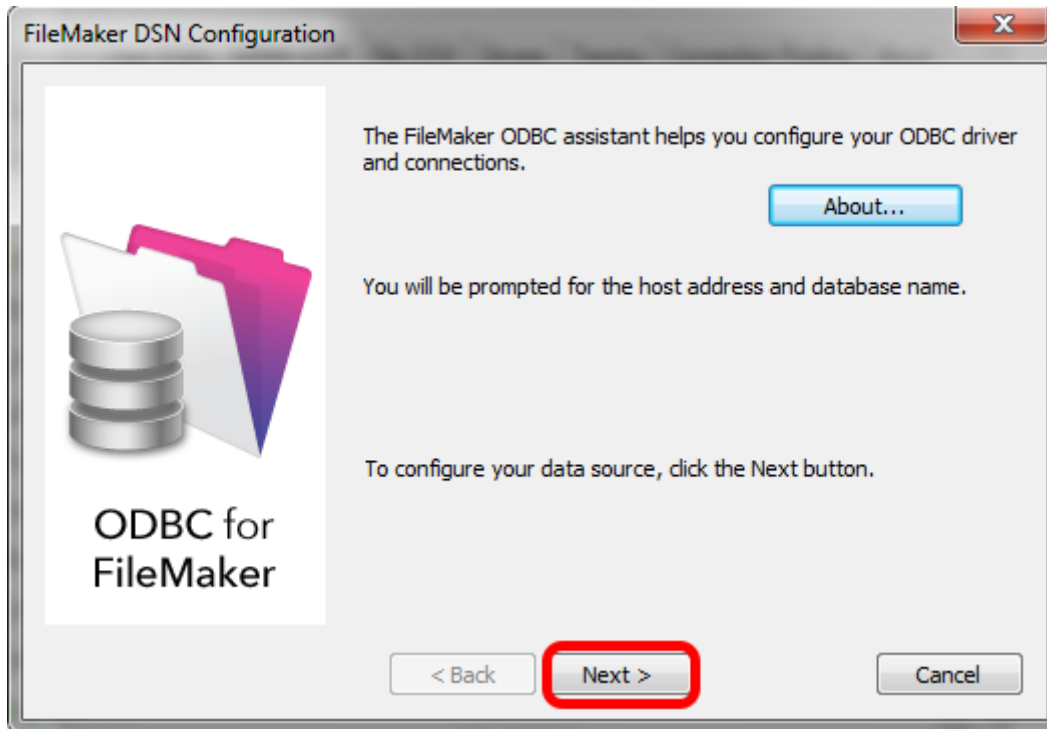
(1) Click the System DSN tab, then (2) click the Add button.

Select ODBC Driver - FileMaker 11 - Windows



(1) Select the FileMaker ODBC driver, then (2) click the Finish button.

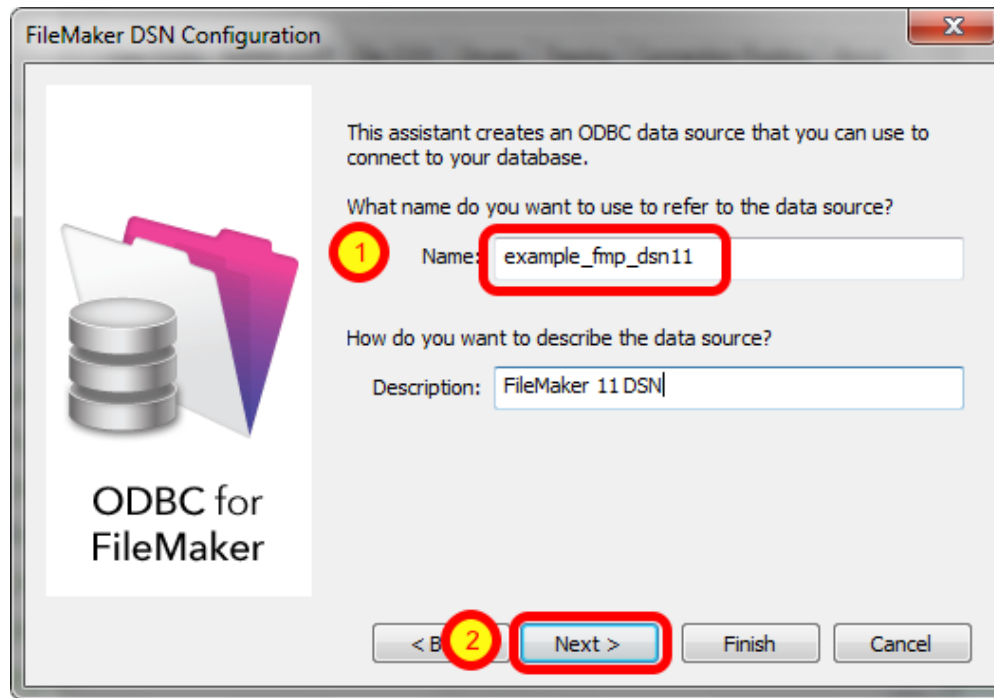
ODBC Driver Configuration - FileMaker 11 - Windows (1)



Click Next button.

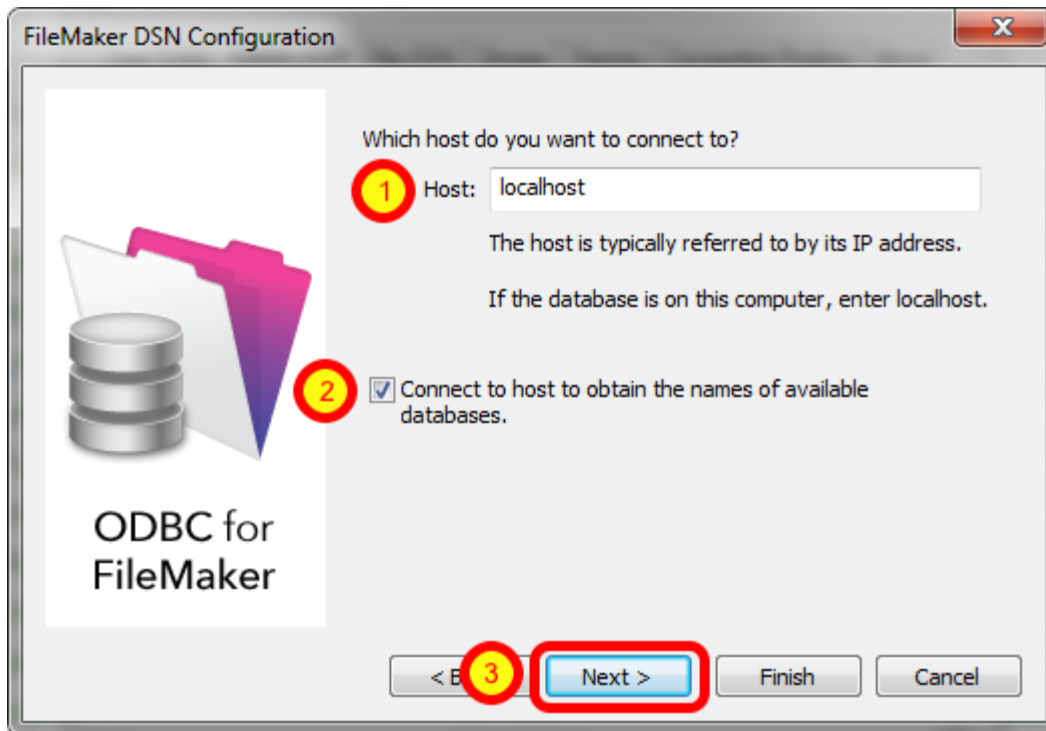
Click the About button if you need to find the version number for the driver.

ODBC Driver Configuration - FileMaker 11 - Windows (2)



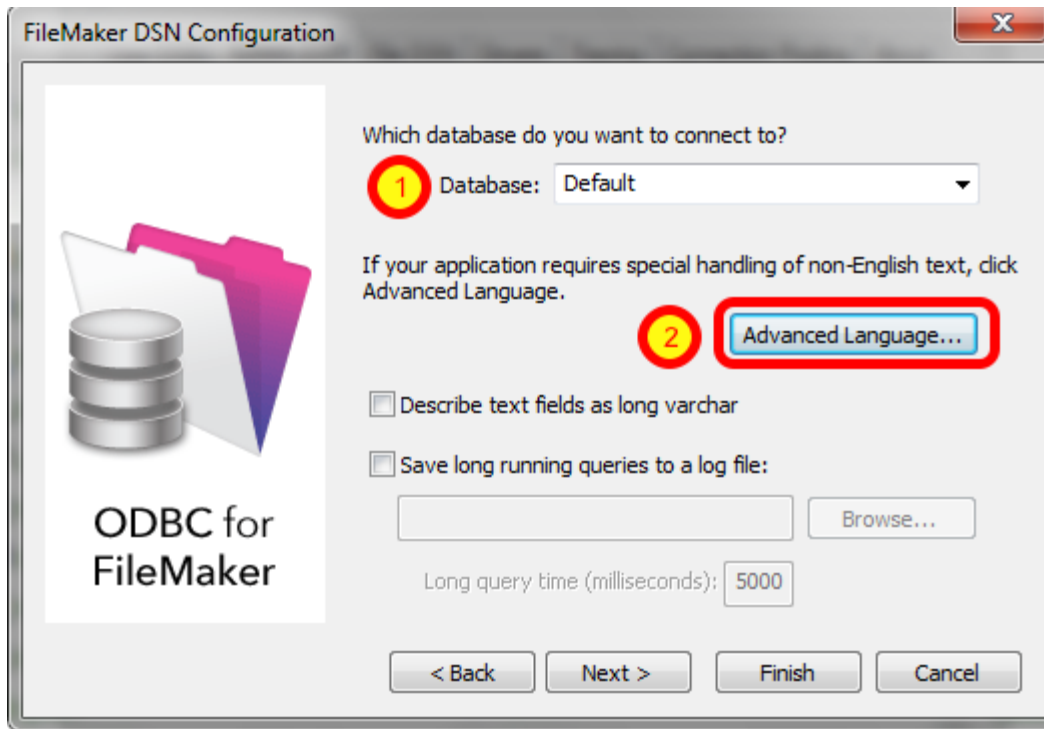
1) Enter a name for the ODBC DSN, (2) click the Next button.

ODBC Driver Configuration - FileMaker 11 - Windows (3)



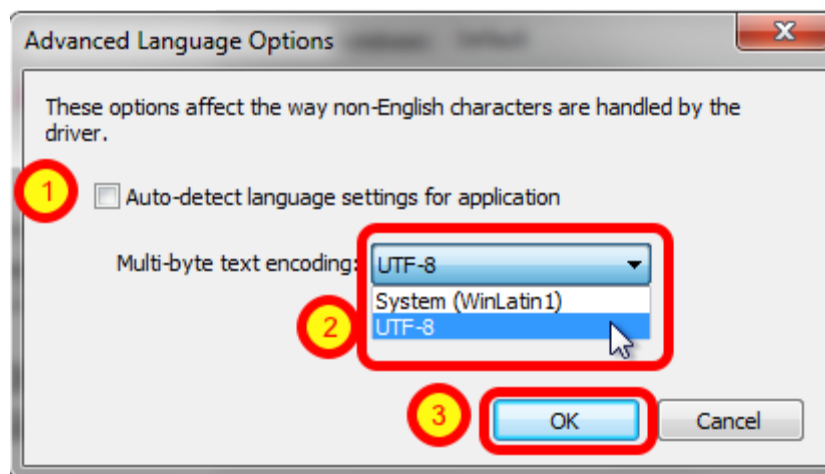
- 1) If you are using a local copy of FileMaker Pro or FileMaker Pro Advanced, then use "localhost" as the host name. Otherwise use the IP address or hostname of the FileMaker Advanced Server.
- 2) You may optionally click the "Connect to host ..." button to get a list of database files.
- 3) Click the Next button.

ODBC Driver Configuration - FileMaker 11 - Windows (4)



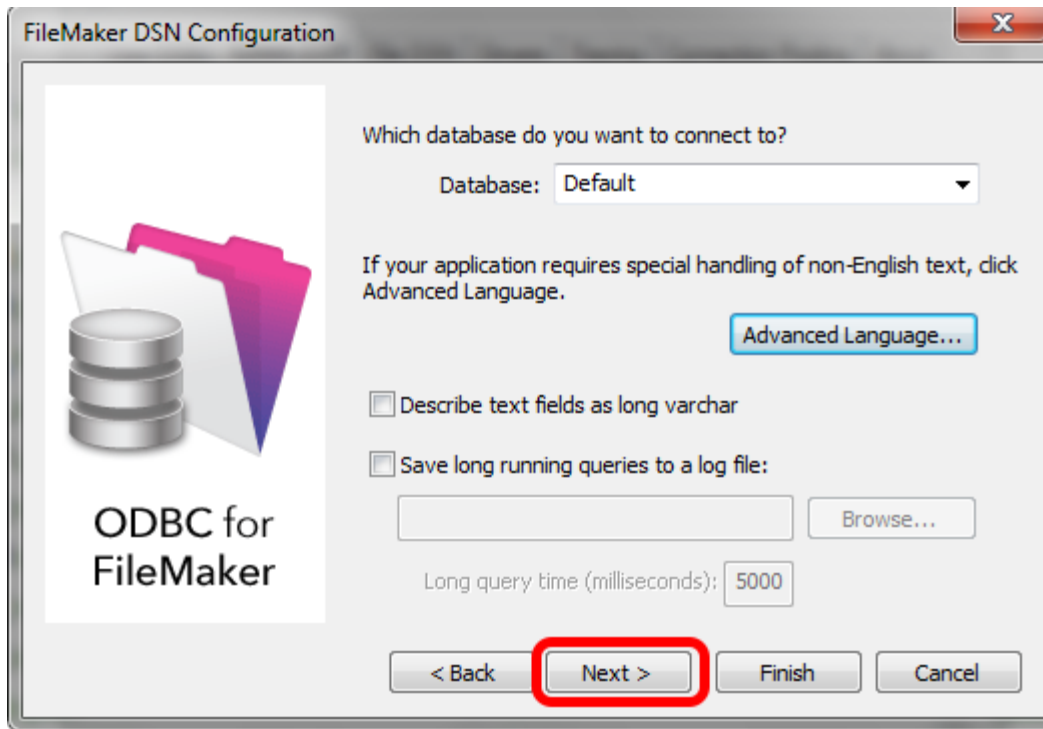
- 1) Enter "Default" as the database name. Or if you have multiple database files open locally or on the server, then select the database name from the list or enter the name of the database. Using the Default keyword means that you can avoid changing the setup of the ODBC DSN when using different database files - but it means that only one file can be open at a time.
- 2) Click the Advanced Language button.

ODBC Driver Configuration - FileMaker 11 - Windows (5)



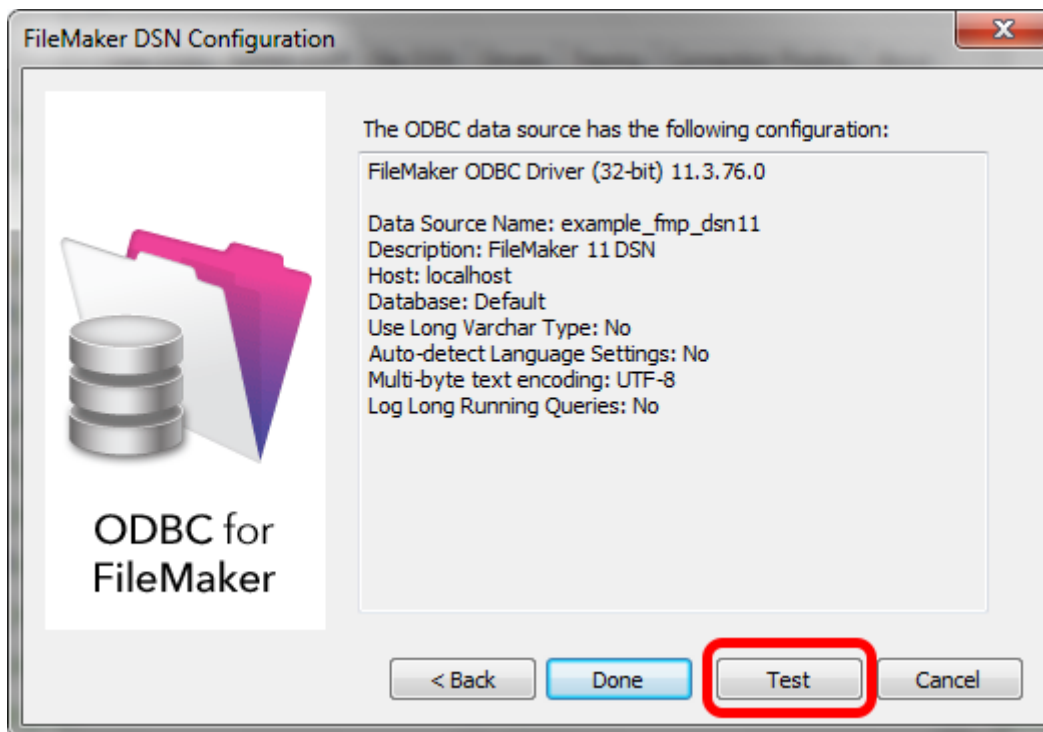
- 1) Uncheck the "Auto-detect language settings" button, 2) select UTF-8 for the text encoding, 3) click the Ok button.

ODBC Driver Configuration - FileMaker 11 - Windows (6)



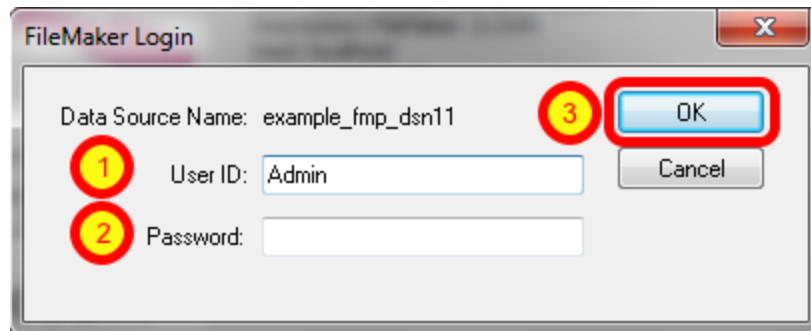
Click the Next button.

ODBC Driver Configuration - FileMaker 11 - Windows (7)



Click the Test button.

ODBC Driver Configuration - FileMaker 11 - Windows (8)



1) Enter Username, 2) Password (if needed), 3) click the Ok button.

Review the test results, make corrections as necessary until the test passes.

ODBC Error Troubleshooting Steps:

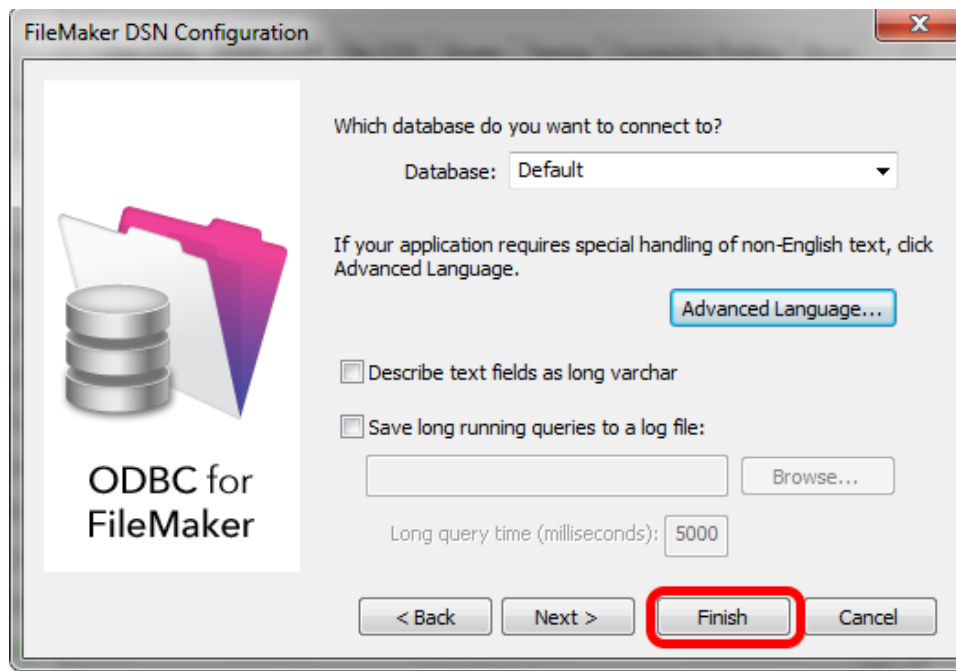
1) Verify that the FileMaker database file is open.

2) Verify that ODBC sharing is enabled for the account entered in the connection test dialog prompt.

3) Make sure that there aren't two different copies of FileMaker running at the same time. Both older and current versions of FileMaker use TCP/IP Port# 2399 for ODBC connectivity. If this type of conflict occurs, close both versions of the FileMaker application, and only open the one copy you want to serve the database file being migrated.

4) Try rebooting the computer (after clicking Ok to save changes and close this ODBC dialog). Then test the DSN again after rebooting.

ODBC Driver Configuration - FileMaker 11 - Windows (9)



Click the Finish button.